

Prognostic significance of PD-L1 expression in patients with colorectal cancer: a meta-analysis*

Siwen Liu¹, Rong Ma¹, Haixia Cao¹, Dan Chen¹, Changwen Jing¹, Zhuo Wang¹, Junying Zhang¹, Yang Wu¹, Jifeng Feng^{1,2} (✉), Jianzhong Wu¹ (✉)

¹ Research Center for Clinical Oncology, Jiangsu Cancer Hospital & Jiangsu Institute of Cancer Research & The Affiliated Cancer Hospital of Nanjing Medical University, Jiangsu 210009, China

² Department of Oncology, Jiangsu Cancer Hospital & Jiangsu Institute of Cancer Research & The Affiliated Cancer Hospital of Nanjing Medical University, Jiangsu 210009, China

Abstract

Background The association between the expression of programmed cell death 1 (PD-1) or its ligand [programmed cell death ligand-1 (PD-L1)] and colorectal cancer (CRC) survival rates remains unclear. Thus, we conducted a meta-analysis to investigate the prognostic value of PD-L1 expression in CRC patients.

Methods All eligible studies related to evaluation of PD-L1 expression and survival of CRC patients were searched in PubMed, Medline, Cochrane library, and the EMBASE database. Hazard ratios (HRs) and 95% confidence intervals (CI) of overall survival (OS) were examined to assess the effect of PD-L1 expression on the survival of CRC patients. The outcomes of this meta-analysis were synthesized based on random-effects model. Subgroup analyses were also performed.

Results Seven studies, wherein OS data were stratified according to the expression status of PD-L1, were analyzed. CRC patients showing positive PD-L1 expression were associated with significantly poorer prognoses in terms of overall survival, compared with those displaying negative PD-L1 expression (HR = 1.43, 95% CI: 1.07–1.92; $P = 0.02$). In the subgroup analyses, H-scores as well as the percentage of stained cells indicated that PD-L1 expression was significantly associated with poor prognosis (HR = 1.90, 95% CI: 1.38–2.62, $P < 0.01$; HR = 1.81, 95% CI: 1.08–3.03, $P = 0.02$). Immunohistochemical staining, utilizing a rabbit anti-PD-L1 antibody, revealed significantly superior survival in the PD-L1 negative group compared with the PD-L1 positive expression group (HR = 1.92; 95% CI, 1.40–2.63; $P < 0.01$). Moreover, PD-L1 expression was significantly associated with poor prognosis when polyclonal antibodies were used (HR = 1.84; 95% CI, 1.30–2.61; $P < 0.01$).

Conclusion Our meta-analysis indicated that PD-L1 expression status is a significant prognostic factor for CRC patients. Positive PD-L1 expression was associated with worse CRC survival. Evaluation via different immunohistochemistry based techniques may partly account for the contradictory results. Therefore, further investigative studies using larger sample sizes are felt to be needed to elucidate the prognostic value of PD-L1 expression in CRC patients.

Key words: colorectal cancer (CRC); programmed cell death ligand-1 (PD-L1); prognosis; Meta-analysis

Received: 23 October 2018
Revised: 10 November 2018
Accepted: 20 November 2018

Colorectal cancer (CRC) is a common cancer and one of the leading causes of cancer-related morbidity and mortality worldwide [1–2]. Although surgery, chemotherapy, and radiotherapy have significantly improved the clinical outlook for CRC patients, the 5-year survival rate still remains low [3–4]. Thus, alternative strategies, such as immunotherapy, are now being

considered for the management of CRC [5]. Furthermore, many key molecular alterations are used as biomarkers for predicting prognosis. Programmed cell death 1 (PD-1) and PD-1 ligand 1 (PD-L1) expression have been observed in various malignancies and are reported to play an important role in modulating the strength of T cell response [6–7]. Blockade of the PD-1/PD-L1 signaling

✉ Correspondence: Jifeng Feng. Email: fjif@vip.sina.com; Jianzhong Wu. Email: wujzh1528@126.com

* Supported by the National Natural Science Foundation of China (No. 81372396), Natural Science Foundation of Jiangsu Province (No. BK20141016 and BK20141017).

© 2019 Huazhong University of Science and Technology

pathway can minimize damage to surrounding normal tissues by maintaining T cell activation [8-9]. Previous studies have found that PD-1/PD-L1 expression in tumor cells is correlated with poor prognoses [10-13]. Moreover, some clinical studies have shown that anti-PD-1 or PD-L1 antibodies may prolong the survival of melanoma patients, with particular reference to advanced and refractory patients [14-16].

Despite the development of antibodies against PD-1 and PD-L1, their predictive value of prognosis for CRC patients remains unclear. The association between PD-1/PD-L1 expression in CRC and patient survival also remains controversial. Previous meta-analyses has shown that PD-1/PD-L1 expression status was a significant prognostic factor in malignancies, and that positive PD-1/PD-L1 expression was associated with significantly poorer overall survival (OS), especially in patients with clear cell renal cell carcinoma and pancreatic cancer [17]. However, another meta-analysis contended that there was no statistically significant relationship between PD-L1 expression and the prognosis for non-small-cell lung cancer patients [18]. However, strong PD-L1 expression was observed in patients with CRC and was associated with a significant improvement in the 5-year survival rate [19].

Studies related to the prognostic significance of PD-1/PD-L1 expression in CRC patients have yielded inconsistent results due to a lack of statistical power. Moreover, meta-analyses pertaining to CRC related expression of PD-1 and PD-L1 have not been performed. In order to address these issues, we conducted a meta-analysis to evaluate the association between prognostic value and PD-L1 status in CRC patients.

Material and methods

Literature search

All studies evaluating PD-L1 expression and survival of CRC patients were retrieved by searching PubMed, Medline, Cochrane library, and the EMBASE database. Different search term combinations were used, including “colorectal cancer,” “PD-L1,” “B7-H1,” “survival,” and “prognosis.” A manual search through all references of the relevant articles was also performed.

Inclusion and exclusion criteria

To be eligible for the current meta-analysis, studies had to meet the following criteria: (1) investigation of the association between PD-L1 expression and the prognosis for CRC patients; (2) the expression level of PD-L1 was scored as either “positive” or “negative” via immunohistochemistry (IHC) staining; (3) The primary outcome of OS according to PD-L1 status was available for estimation. Studies with insufficient data were excluded.

Data extraction and quality assessment

We extracted the required data from all eligible studies; the name of the first author, the year of publication, IHC evaluation method, cut off value for positive PD-L1 expression, primary antibody, and OS. OS data were extracted in the form of hazard ratios (HRs) with 95% confidence intervals (CI). In order to ensure the quality of our meta-analysis, two authors used the Methodological Index for Nonrandomized Studies (MINORS) to independently evaluate the quality of the eligible studies.

Statistical analysis

All statistical analyses were performed using RevMan 5.3 (Copenhagen: The Nordic Cochrane Centre, The Cochrane Collaboration, 2014) analysis software and Stata software. HRs for OS with 95% CIs was used to assess the effect of PD-L1 expression on the survival of CRC patients. Subgroup analyses were performed according to patients from different countries, IHC evaluation methods and primary antibodies (source, type, and catalog), respectively. Heterogeneity among studies was assessed using the Q and I² statistics [20]. The random effect model was utilized in case of potential heterogeneity. Additionally, publication bias was evaluated using Egger’s [21] and Begg-Mazumdar [22] procedures. For all tests, statistical significance was set at $P < 0.05$ for a two tailed test.

Results

Search results

The search results were shown (Fig. 1). The primary literature research retrieved a total of 690 potentially relevant articles. After screening titles and abstracts, 569 references were excluded due to being irrelevant to the

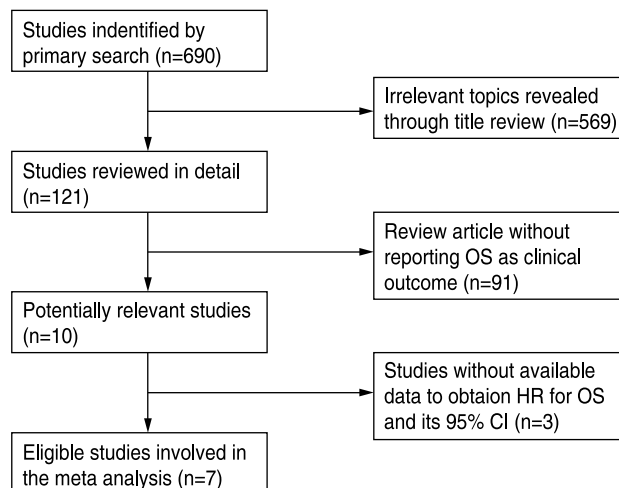


Fig. 1 Process for identification of eligible studies.

subject of the analysis. Additionally, 91 studies, which did not report OS as a clinical outcome, were excluded. Next, three studies with insufficient survival data were excluded after full-texts were read. Ultimately, the seven remaining studies were included for further statistical evaluation [23–29].

Characteristics of included trials

The characteristics of analyzed studies were summarized (Table 1). In the trials that were included, CRC patients had been used to evaluate PD-L1 expression and its relationship with OS in CRC. PD-L1 expression was evaluated via the IHC method in all included studies.

Meta-analyses of PD-L1 expression in terms of OS

Seven studies provided 5-year OS for CRC. In CRC patients, positive PD-L1 expression was associated with significantly poorer OS when compared to negative PD-L1 expression (Random-effects model, HR = 1.43, 95% CI: 1.07–1.92; $P = 0.02$; Fig. 2). There was significant heterogeneity among studies ($I^2 = 51%$, $P = 0.06$). However, no evidence of significant publication bias was detected (Egger test, $t = 2.42$, $P = 0.06$; Begg test, $Z = 0.62$, $P = 0.54$).

Subgroup analysis between PD-L1 expression and OS

PD-L1 expression was not significantly associated with poor prognosis for both Chinese and non-Chinese patients (Fig. 3). With respect to the different methods of IHC evaluation, the H-score system method, as well as the percentage of stained cells method, indicated that positive PD-L1 expression was significantly associated with poor prognosis when compared with negative PD-L1 expression (HR = 1.90, 95% CI: 1.38–2.62, $P < 0.01$; HR = 1.81, 95% CI: 1.08–3.03, $P = 0.02$; Fig. 4). Furthermore, significantly superior survival was shown in the negative PD-L1 expression group compared with the positive PD-L1 expression group when rabbit antibody was used as the primary anti-PD-L1 antibody (HR = 1.92; 95% CI, 1.40–2.63; $P < 0.01$; Fig. 5). Moreover, PD-L1 expression was significantly associated with poor prognosis when the polyclonal antibody (PAB) was used (HR = 1.84; 95% CI, 1.30–2.61; $P < 0.01$; Fig. 6). No statistical relationships between PD-L1 expression and CRC prognosis were detected in the remaining subgroups.

Table 1 Characteristics of included studies

Study	Year	Country	IHC Evaluation	Cutoff Value for PD-L1/ PD-1 Positive	Antibody (Company)	Antibody			HR for OS	Lower limit of 95% CI	Upper limit of 95% CI
						Source	Type	Catalog			
Shi SJ	2013	China	H-score	> 200	Abcam, UK	Rabbit	PAB	ab58810	China	China	3.576
Song MM	2013	US	DIA	NR	Abcam, UK	NR	NR	NR	US	US	1.979
Liang M	2014	China	H-score	> 20	Santa Cruz Biotechnology, USA	Rabbit	PAB	NR	China	China	2.713
Zhu JJ	2014	China	NR	NR	Boster, China	Mouse	MAB	Clone 2H11	China	China	0.98
Zhu HL	2015	China	Percentage	1%	Abcam, UK	Rabbit	MAB	NR	China	China	4.684
Saigusa	2016	Japan	H-score	NR	LifeSpan BioSciences, USA	Mouse	MAB	Clone 27A2	Japan	Japan	5.016
Wang LS	2016	China	Percentage	1%	Spring Bioscience, USA	NR	MAB	SP142	China	China	2.89

DIA: Digital image analysis; HR: Hazard ratio; MAB: Monoclonal antibody; NR: Not reported; PAB: Polyclonal antibody; H-score: SI (Staining intensity)*PP (Percentage of positive cells) (SI: 0, negative; 1, weak; 2, moderate; and 3, strong; PP: 0, negative; 1 to 100, 1% to 100% positive cells).

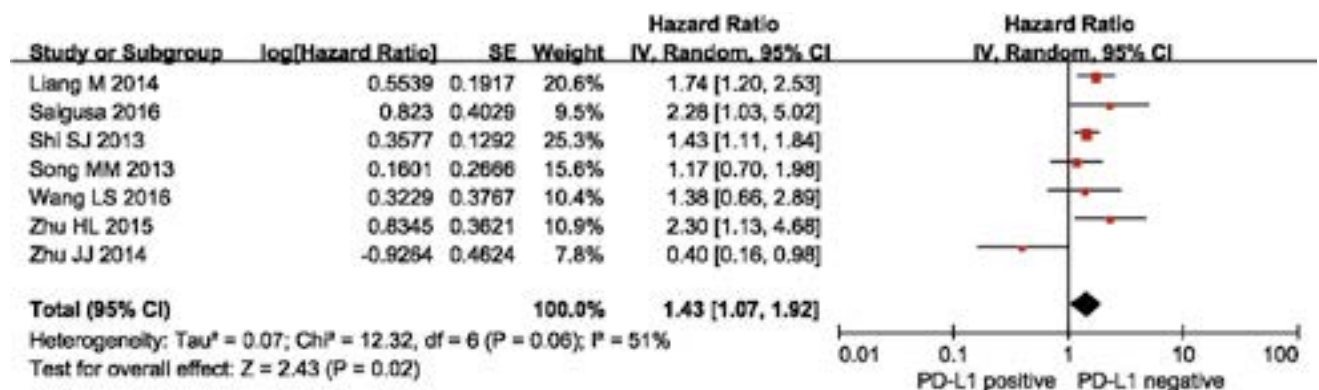


Fig. 2 Meta-analysis of PD-L1 positive versus PD-L1 negative on CRC tissues.

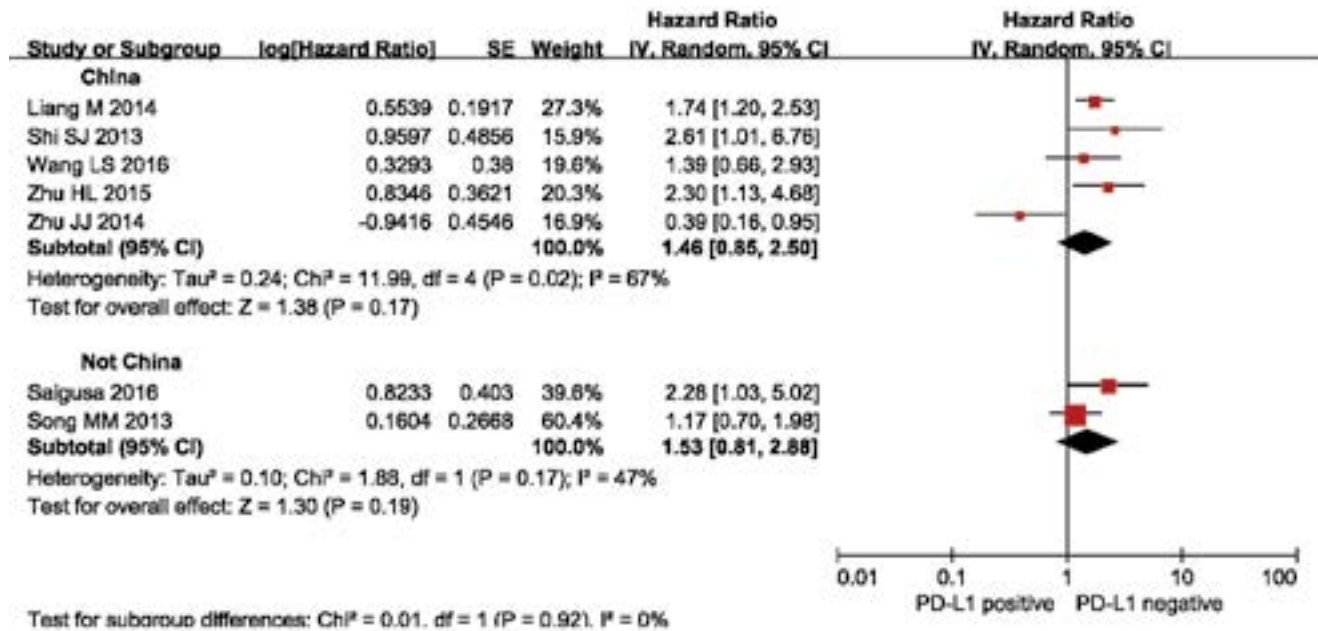


Fig. 3 Subgroup analysis of PD-L1 positive versus PD-L1 negative on CRC tissues of patients from different countries.

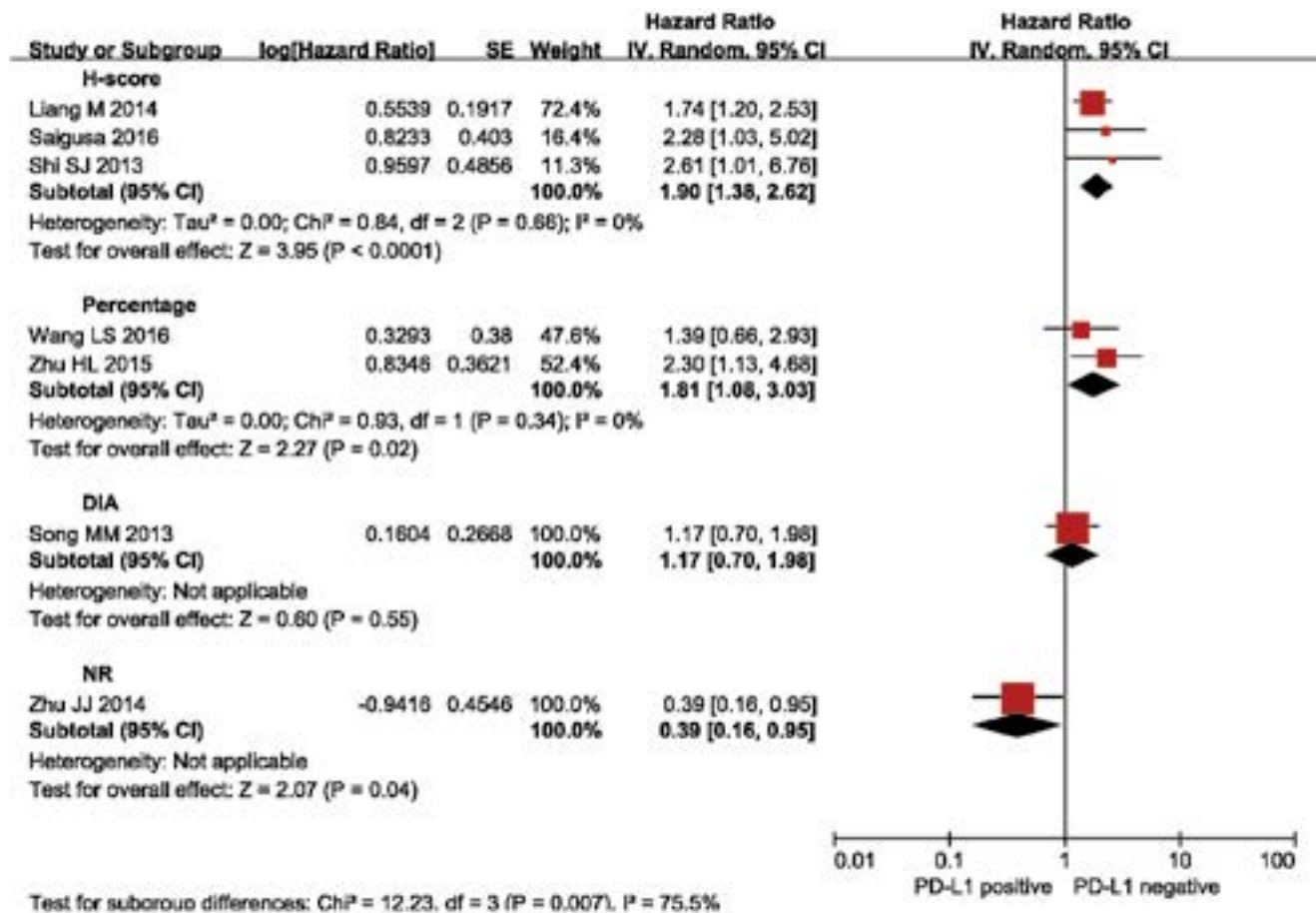


Fig. 4 Subgroup analysis of positive expression of PD-L1 on tumor cells according to IHC evaluation method.

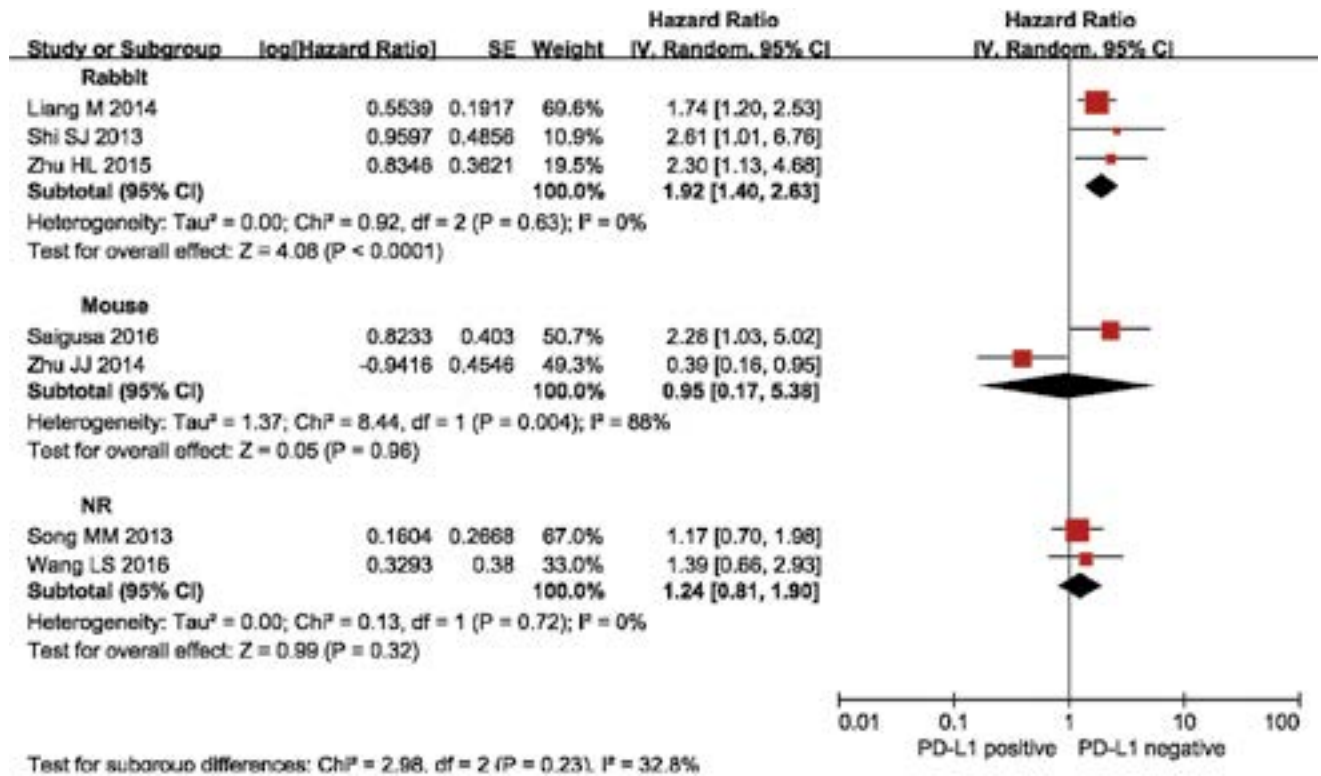


Fig. 5 Subgroup analysis of the association between PD-L1 expression and different source of antibody.

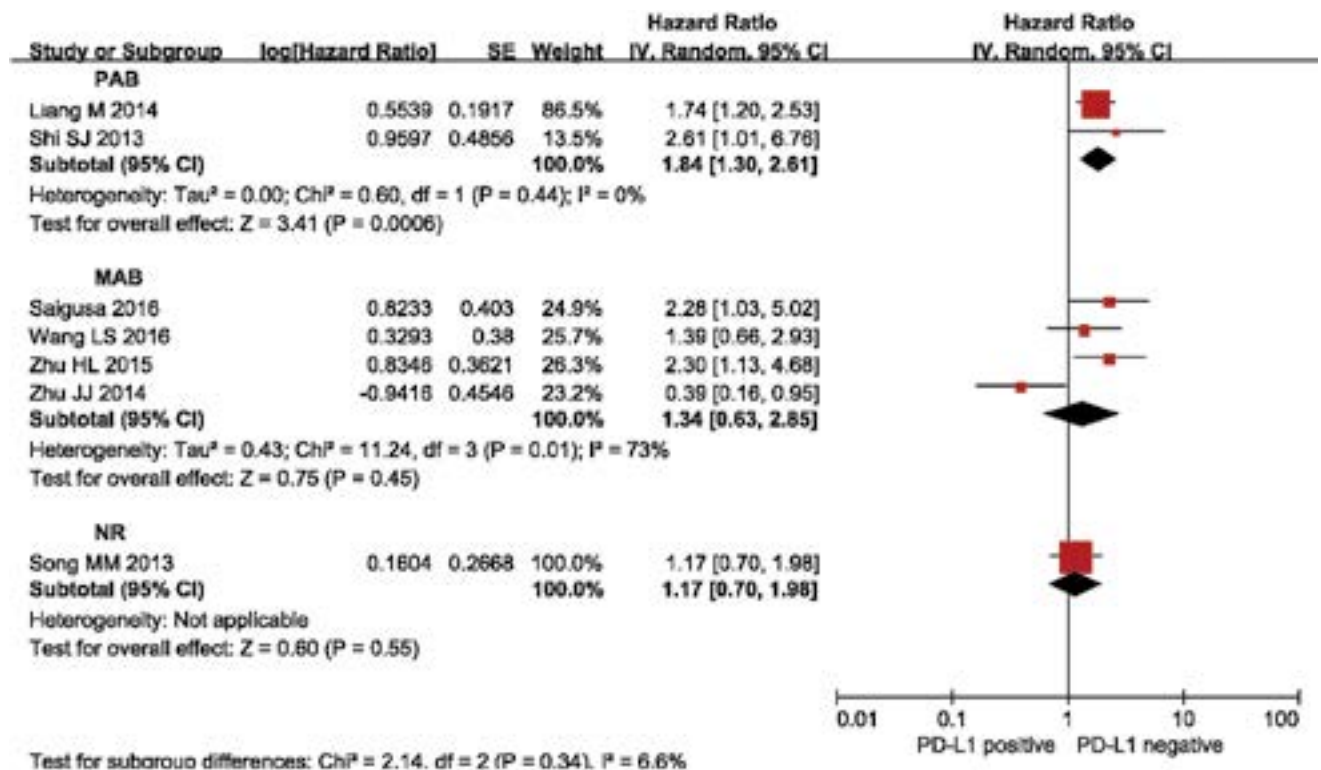


Fig. 6 Subgroup analysis of the association between PD-L1 expression and different type of antibody.

Discussion

Recent studies have shown that PD-1/PD-L1 is highly expressed in a variety of human cancers^[30-31]. High PD-1/PD-L1 expression may contribute to tumor immune evasion^[32]. However, correlation between PD-1/PD-L1 expression levels and cancer progression remains a controversial subject. Previous studies have shown that PD-1/PD-L1 expression levels are indicators of poor prognoses for patients with renal cell carcinoma, gastric carcinoma, and pancreatic cancer^[17].

Our meta-analysis explored the association between PD-L1 expression and prognosis for CRC patients. The results indicated that PD-L1 expression was associated with a poor prognosis for CRC. Moreover, subgroup analysis showed that positive PD-L1 expression was associated with poor prognosis for CRC patients when different antibodies or different IHC methods were used. As a whole, these results confirmed that PD-L1 plays a key role in cancer immune escape and that activation of the PD-L1 pathway had a profoundly adverse prognostic impact on CRC patients. Thus, therapies targeting PD-L1, such as blocking PD-L1, may improve antitumor immunity and display clinical responses in CRC patients expressing high PD-L1 levels.

PD-L1 and PD-1 were found to play an important role in cell proliferation, apoptosis, migration, and invasion, leading to the prevention of tumor destruction^[10]. Results of previous studies have confirmed the role of PD-L1/PD-1 in CRC development^[33]. Our results indicated that CRC patients with positive PD-L1 expression have a worse 5-year outcome. Previous studies reporting on OS demonstrated that PD-L1 overexpression and PD-1 expression were associated with prognoses for CRC patients^[26-29]. Potential association between PD-L1/PD-1 expression and prognosis for other tumors has also been assessed by previous meta-analyses^[10, 17]. PD-1 overexpression in non-small-cell lung cancer (NSCLC) was associated with a poor prognosis for NSCLC^[34-35]. However, no significant correlation was found between PD-L1 expression and prognosis for NSCLC, suggesting that PD-L1 was not a prognostic predictor for NSCLC patients^[10]. Differences between methods used in these studies, such as different methods of defining positive vs negative PD-L1/PD-1 expression and the use of different batches of PD-L1/PD-1 antibodies, may partly account for the contradictory results.

Subgroup analyses of IHC methods, definition of positive PD-L1 expression and the sources and types of primary antibodies used showed that both IHC evaluation methods and primary antibodies displayed a consistent prognostic correlation with overall results. Positive PD-L1 expression in tumor-infiltrating immune cells was associated with a worse prognosis compared

with the negative PD-L1 expression group when both rabbit and PAB antibodies were used, as well as when both percentage evaluation method and H-score system were used. A previous study reported that positive PD-1 expression was an independent predictor for colorectal carcinoma prognosis when the H-score system was used as the IHC evaluation method^[17]. Another study has indicated that PD-L1 expression was a prognostic indicator for CRC patients when digital image analysis was used as the IHC evaluation method^[36]. These results implied that further studies with larger sample sizes might be needed to confirm the relationship between PD-L1/PD-1 expression and prognosis for CRC patients with different baseline characteristics.

In conclusion, our meta-analysis provided evidence that PD-L1 expression was an independent predictor of prognosis for CRC. Overexpression of PD-L1, as measured via IHC, was associated with a worse prognosis for CRC. These new findings have improved understanding of the association between PD-L1 and the progression of CRC. Moreover, antibody-mediated blockade of PD-L1 may represent a promising treatment target for CRC.

Conflict of interest

The authors declare that they have no conflict of interest.

References

1. Vermeer NCA, Snijders HS, Holman FA, *et al.* Colorectal cancer screening: systematic review of screen-related morbidity and mortality. *Cancer treatment reviews*, 2017, 54: 87–98.
2. Chiang JM, Chang CJ, Jiang SF, *et al.* Pre-operative serum albumin level substantially predicts post-operative morbidity and mortality among patients with colorectal cancer who undergo elective colectomy. *Eur J Cancer Care*, 2017, 26: e12403.
3. Breugom AJ, Swets M, Bosset JF, *et al.* Adjuvant chemotherapy after preoperative (chemo) radiotherapy and surgery for patients with rectal cancer: a systematic review and meta-analysis of individual patient data. *Lancet Oncol*, 2015, 16: 200–207.
4. Miller KD, Siegel RL, Lin CC, *et al.* Cancer treatment and survivorship statistics, 2016. *CA: Cancer J Clin*, 2016, 66: 271–289.
5. Xiao Y, Freeman G J. The microsatellite instable subset of colorectal cancer is a particularly good candidate for checkpoint blockade immunotherapy. *Cancer Discov*, 2015, 5: 16–18.
6. Rizvi NA, Hellmann MD, Snyder A, *et al.* Mutational landscape determines sensitivity to PD-1 blockade in non-small cell lung cancer. *Science*, 2015, 348: 124–128.
7. Reck M, Rodríguez-Abreu D, Robinson AG, *et al.* Pembrolizumab versus chemotherapy for PD-L1-positive non-small-cell lung cancer. *New England J Med*, 2016, 375: 1823–1833.
8. Noman M Z, Desantis G, Janji B, *et al.* PD-L1 is a novel direct target of HIF-1 α , and its blockade under hypoxia enhanced MDSC-mediated T cell activation. *J Exp Med*, 2014, 211: 781–790.
9. McAlees JW, Lajoie S, Dienger K, *et al.* Differential control of CD4+ T-cell subsets by the PD-1/PD-L1 axis in a mouse model of allergic asthma. *Eur J Immunol*, 2015, 45: 1019–1029.

10. Wu P, Wu D, Li L, *et al.* PD-L1 and survival in solid tumors: a meta-analysis. *PLoS one*, 2015, 10: e0131403.
11. Chen J, Jiang CC, Jin L, *et al.* Regulation of PD-L1: a novel role of pro-survival signalling in cancer. *Ann Oncol*, 2015, 27: 409–416.
12. Bellmunt J, Mullane SA, Werner L, *et al.* Association of PD-L1 expression on tumor-infiltrating mononuclear cells and overall survival in patients with urothelial carcinoma. *Ann Oncol*, 2015, 26: 812–817.
13. Mony JT, Zhang L, Ma T, *et al.* Anti-PD-L1 prolongs survival and triggers T cell but not humoral anti-tumor immune responses in a human MUC1-expressing preclinical ovarian cancer model. *Cancer Immunol Immunother*, 2015, 64: 1095–1108.
14. Shukuya T, Mori K, Amann JM, *et al.* Relationship between overall survival and response or progression-free survival in advanced non-small cell lung cancer patients treated with anti-PD-1/PD-L1 antibodies. *J Thorac Oncol*, 2016, 11: 1927–1939.
15. Philips G K, Atkins M. Therapeutic uses of anti-PD-1 and anti-PD-L1 antibodies. *Int Immunol*, 2014, 27: 39–46.
16. Herbst RS, Baas P, Kim D W, *et al.* Pembrolizumab versus docetaxel for previously treated, PD-L1-positive, advanced non-small-cell lung cancer (KEYNOTE-010): a randomised controlled trial. *Lancet*, 2016, 387: 1540–1550.
17. Zhang Y, Kang S, Shen J, *et al.* Prognostic significance of programmed cell death 1 (PD-1) or PD-1 ligand 1 (PD-L1) Expression in epithelial-originated cancer: a meta-analysis. *Medicine*, 2015, 94: e515.
18. Zhong A, Xing Y, Pan X, *et al.* Prognostic value of programmed cell death-ligand 1 expression in patients with non-small-cell lung cancer: evidence from an updated meta-analysis. *Onco Targets Ther*, 2015, 8: 3595.
19. Drosier RA, Hirt C, Viehl CT, *et al.* Clinical impact of programmed cell death ligand 1 expression in colorectal cancer. *Eur J Cancer*, 2013, 49: 2233–2242.
20. Higgins JPT, Thompson SG, Deeks JJ, *et al.* Measuring inconsistency in meta-analyses. *BMJ*, 2003, 327: 557.
21. Egger M, Smith GD, Schneider M, *et al.* Bias in meta-analysis detected by a simple, graphical test. *BMJ*, 1997, 315: 629–634.
22. Begg CB, Mazumdar M. Operating characteristics of a rank correlation test for publication bias. *Biometrics*, 1994: 1088–1101.
23. Shi SJ, Wang LJ, Wang GD, *et al.* B7-H1 expression is associated with poor prognosis in colorectal carcinoma and regulates the proliferation and invasion of HCT116 colorectal cancer cells. *PLoS One*, 2013, 8: e76012.
24. Liang M, Li J, Wang D, *et al.* T-cell infiltration and expressions of T lymphocyte co-inhibitory B7-H1 and B7-H4 molecules among colorectal cancer patients in northeast China's Heilongjiang province. *Tumor Biol*, 2014, 35: 55–60.
25. Zhu J, Chen L, Zou L, *et al.* MiR-20b,-21, and-130b inhibit PTEN expression resulting in B7-H1 over-expression in advanced colorectal cancer. *Hum immunol*, 2014, 75: 348–353.
26. Zhu H, Qin H, Huang Z, *et al.* Clinical significance of programmed death ligand-1 (PD-L1) in colorectal serrated adenocarcinoma. *Int J Clin Exp Pathol*, 2015, 8: 9351.
27. Saigusa S, Toiyama Y, Tanaka K, *et al.* Implication of programmed cell death ligand 1 expression in tumor recurrence and prognosis in rectal cancer with neoadjuvant chemoradiotherapy. *Int J Clin Oncol*, 2016, 21: 946–952.
28. Song M, Chen D, Lu B, *et al.* PTEN loss increases PD-L1 protein expression and affects the correlation between PD-L1 expression and clinical parameters in colorectal cancer. *PLoS one*, 2013, 8: e65821.
29. Wang L, Ren F, Wang Q, *et al.* Significance of programmed death ligand 1 (PD-L1) immunohistochemical expression in colorectal cancer. *Mol Diagn Ther*, 2016, 20: 175–181.
30. D'incecco A, Andreozzi M, Ludovini V, *et al.* PD-1 and PD-L1 expression in molecularly selected non-small-cell lung cancer patients. *Bri J Cancer*, 2015, 112: 95.
31. Ohaegbulam KC, Assal A, Lazar-Molnar E, *et al.* Human cancer immunotherapy with antibodies to the PD-1 and PD-L1 pathway. *Trends Mol Med*, 2015, 21: 24–33.
32. Mu CY, Huang JA, Chen Y, *et al.* High expression of PD-L1 in lung cancer may contribute to poor prognosis and tumor cells immune escape through suppressing tumor infiltrating dendritic cells maturation. *Med Oncol*, 2011, 28: 682–688.
33. Rosenbaum MW, Bledsoe JR, Morales-Oyarvide V, *et al.* PD-L1 expression in colorectal cancer is associated with microsatellite instability, BRAF mutation, medullary morphology and cytotoxic tumor-infiltrating lymphocytes. *Mod Pathol*, 2016, 29: 1104.
34. Velcheti V, Schalper KA, Carvajal DE, *et al.* Programmed death ligand-1 expression in non-small cell lung cancer. *Lab investig*, 2014, 94: 107.
35. He J, Hu Y, Hu M, *et al.* Development of PD-1/PD-L1 pathway in tumor immune microenvironment and treatment for non-small cell lung cancer. *Sci Rep*, 2015, 5: 13110.
36. Huang B, Chen L, Bao C, *et al.* The expression status and prognostic significance of programmed cell death 1 ligand 1 in gastrointestinal tract cancer: a systematic review and meta-analysis. *Onco Targets Ther*, 2015, 8: 2617.

DOI 10.1007/s10330-018-0312-2

Cite this article as: Liu SW, Ma R, Cao HX, *et al.* Prognostic significance of PD-L1 expression in patients with colorectal cancer: a meta-analysis. *Oncol Transl Med*, 2019, 5: 68–74.